

Pro Series Windlass Parts

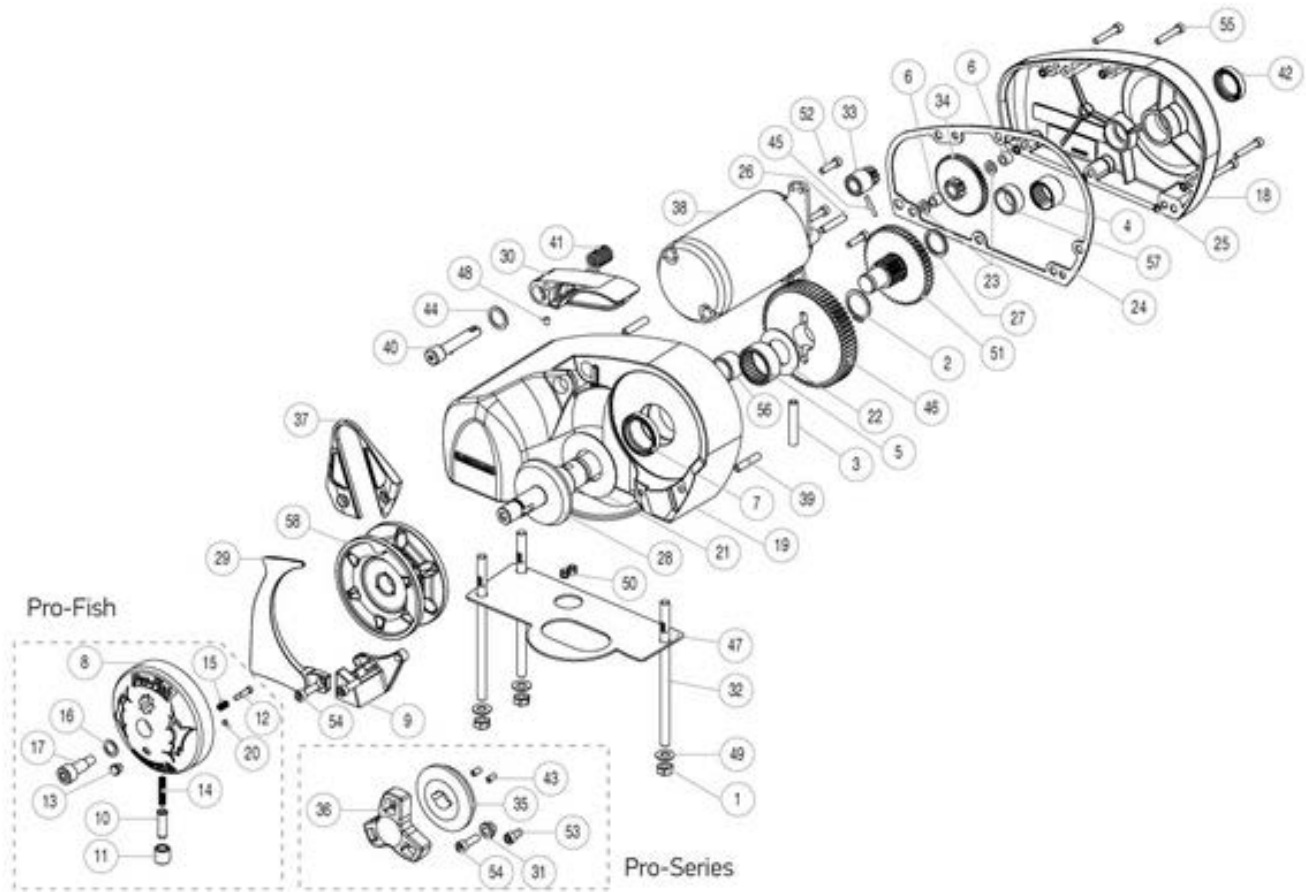
Please note that all windlass parts are special order products.

Windlass Parts are Not Returnable!

* Kits are for use on Pro-Series/Pro-Fish (2nd Generation) with Serial Numbers starting 561***, 563***, 565***, 571***
For earlier kits please check the manual supplied with your windlass or contact Lewmar: 203-458-6200.

Serial Numbers			
	1st Gen	2nd Gen	3rd Gen
Series 700	560	561	567
Series 1000	570	571	572
Fish 700	562	563	569
Fish 1000	564	565	566

Pro-Series/Fish exploded view



Product Description

Range of spare parts for the Lewmar Pro-series/Pro-Fish windlasses

Part Number	Description	Items Included (Qty)
66000096	Pro-Series Stripper Arm Kit	37(1), 53(1), 54(2)
66000098	Pro-Series Clutch Nut & Cone Kit	35(1), 36(1), 43(2)
66000099	Clutch Lever (not Shown)	
66000101	504 Gypsy RC 8mm (5/16")	58A(1)
66000102	516 Gypsy RC 5/16" G4	58B(1)
66000768	Pb Gypsy (14-16mm Leaded Line)	58C(1)
66000769	Dual Gypsy RC 6mm - 7mm - 1/4"	58(1)
66000634	Bearing Kit	2(1), 4(1), 5(1), 6(2), 56(1), 57(1)
66000616	Pro-Fish Conversion Kit	8(1), 9(1), 10(1), 11(1), 12(1), 13(1),14(1), 15(1), 16(1), 17(1), 20(1), 54(2)
66000617	Pro-Fish Stopper Kit	9(3), 54(2)
66000620	Pro-Fish Drive Cap Assembly Kit	8(1), 10(1), 11(1), 12(1), 13(1),14(1), 15(1), 16(1), 17(1), 20(1)
66000758	Pro-Series Washer Kit	21(1), 22(1), 23(2), 27(1)
66000759	Pro-Series Gasket Kit	24(1), 25(6)
66000760	Pro-Series Compound Gear kit	5(1)
66000761	Pro-Series Gears & Shaft Kit	2(1), 3(1), 6(2), 23(2), 28(1), 33(1), 34(1), 45(1), 46(1), 51(1)
66000762	Pro-Series Gear Train Cover Kit	4(1), 18(1), 24(1), 25(6). 42(1), 55(6), 57(1)
66000107	Pro-Series 12V Motor	38(1)
66000764	Pro-Series Seals & Screw Kit	2(1), 3(1), 7(1), 24(1), 25(6), 26(1), 39(2), 42(1), 43(2), 45(1), 52(3), 53(2), 54(3), 55(6)
66000766	Pro-Guard / Control Arm Kit	29(1), 30(1), 31(1), 41(1), 44(1), 48(1), 54(3)