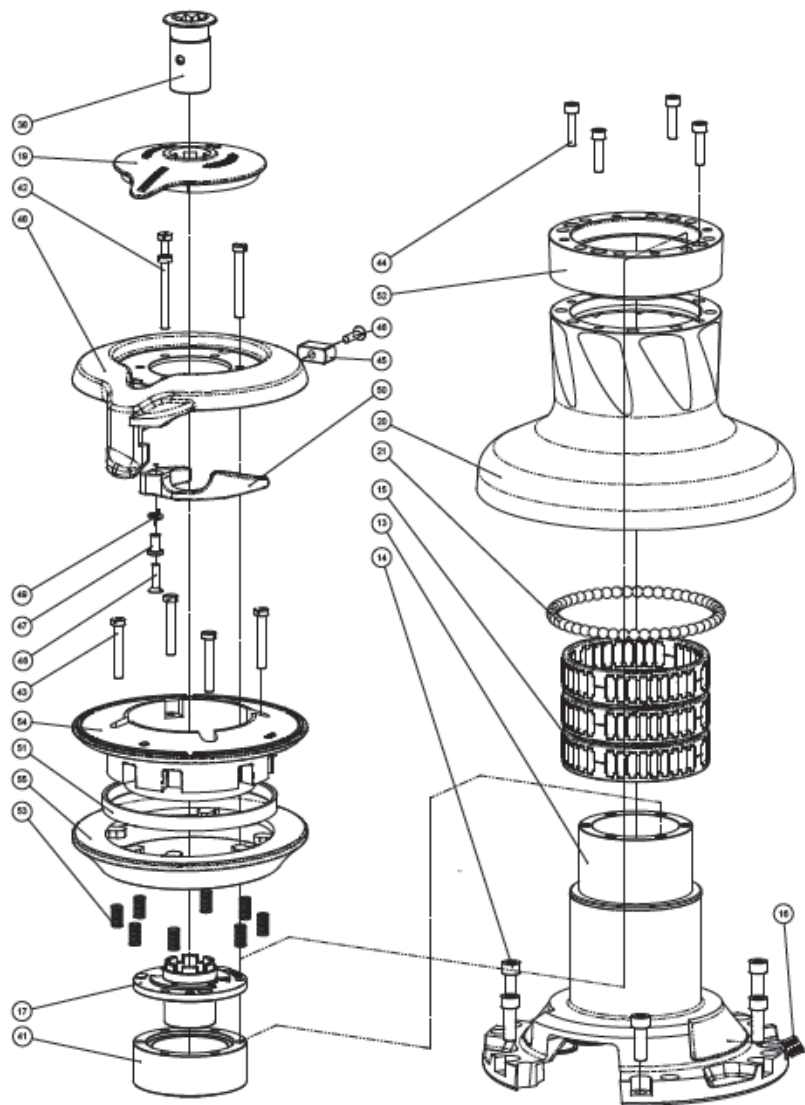
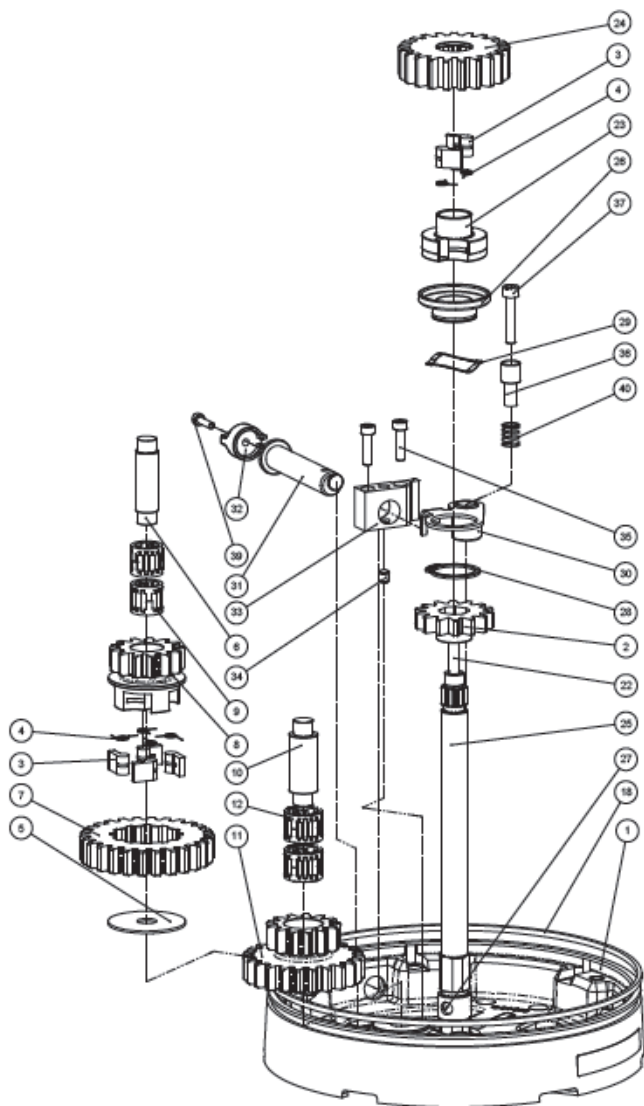


Radial<sup>®</sup> 60 STA Rewind™ Winch

Radial<sup>®</sup> 60 STA Rewind™ Winch

## Radial® 60 STA Rewind™ Winch

Pos.	Qty	Code	Description	Pos.	Qty	Code	Description
1	1	A 965758 00	Assy Base W60**	29	1	M 06308 02	SMALLEY RING 55R0137-517
2	1	S 65755 00 04	Gear Z14 W60	30	1	A 765756 00	Command x W60
3	6	S 00006 00 08	Pawl 26°	31	1	A 965757 00	Assy knob W60
4	6	S 00006 00 01	Pawl Spring dia 5"	32	1	S 42740 00 80	Knob W46
5	1	S278170032	Washer 1.2.5x6x1.5"	33	1	S 65759 00 80	Switch Support W60
6	1	S251010034	Pin for gear	34	1	M6200463	Spring loaded ball plunger 26°
7	1	S 41442 00 41	Fachet gear Z25xN4	35	2	M 06446 03	Hex key M6x20 UNI 9281*
8	1	S 41441 00 04	Pawls Center Gear Z13 N4	36	1	S 41633 00 04	Pin for switch W46
9	2	A72821800	Roller Bearing 14,00/18"	37	1	M 06242 03	Screw M6x30*
10	1	S 41603 00 04	Gear Pin Ø12xØ16x52.5	38	1	A 041632 00	Assy socket W46
11	1	S 41440 00 04	Idler and Pinion Z23/Z13 W60	39	1	M0624103	Screw M4x16 UNI5088*
12	2	A 741623 00	Roll bearing 24x18x18"	40	1	S 41859 00 01	Spring Ø10.67x1 2.7 r1.SPEC C0420-035-05006*
13	1	A 041431 00	Assy Housing Winch 60 Nthw Serial Number Sticker	41	1	S 65762 00 52	Spacer for stopperarms support W60*
14	6	M0606303	Screw M6x25 UNI 5431*	42	3	S 41875 00 03	Screw M6x50 U6107 Teflon Coating*
15	3	A 741450 00	Roller Bearing Ø92xØ107x25"	43	4	M0623103	Screw M6x40 TC DIN64A4*
16	1	S 41876 00 63	Winch Serial Number Sticker	44	4	M 06017 03	Screw M6x25 UNI 5231*
17	1	S 41443 00 40	Stripper Arm Housing W60	45	1	S 41917 00 80	Slider
18	1	S 28170 00 07	Red line	46	2	M 06190 03	Screw M6x20 UNI 6102*
19	1	S 65748 00 81	Cover 2 Speed W60	47	1	S 41659 00 41	Bushing
20	1	A 765750 00	Drum Assembly W60	48	1	S 65746 00 03	Stripper-arm W60
21	50	M 06192 80	Ball 5/16"	49	1	S 41657 00 01	Spring stripper arm W46
22	1	S 65754 00 02	Disconnected rod 60	50	1	S 65747 00 16	Peeler W60 Rewind
23	1	S 65753 00 04	Pawls center Ø8xØ2"	51	1	S 66578 00 80	Spacer ring Winch 60*
24	1	S 65752 00 41	Gear Z23	52	1	S 65761 00 52	Tapered spacer for W60 drum
25	1	S 65751 00 04	Main shaft W60	53	8	S385070011	Spring*
26	1	S 41626 00 41	Disconnected flange	54	1	S 41436 00 A9	Upper Jaw W60
27	2	M 06141 03	Ball 5-16" Inox	55	1	S 65749 00 53	Lower Jaw W60
28	1	M0616603	Seeger Ring UNI 7432-1475 - Ø29 ind. 17-7 Ph				

\*Service kit available; see winch kit section on the website [www.harken.com](http://www.harken.com)

\*\*Winch product sticker



Radial<sup>®</sup> 60 STC Rewind™ Winch

Pos.	Q.ty	Code	Description	Pos.	Q.ty	Code	Description
1	1	A 965758 00	Assy Base W60**	29	1	M 06308 02	SMALLEY RING 55R0137-S17
2	1	S 65755 00 04	Gear Z14 W60	30	1	A 755736 00	Command x W60
3	6	S 00006 00 08	Pawl Ø6"	31	1	A 965757 00	Assy knob W60
4	6	S 00036 00 01	Pawl Spring dia 8"	32	1	S 40740 00 80	Knob W46
5	1	S278170302	Washer 12.5x48x1.5"	33	1	S 65759 00 80	Switch Support W60
6	1	S281010004	Pin for gear	34	1	M6000463	Spring loaded ball plunger Ø6"
7	1	S 41442 00 41	Fachel Gear Z25xH4	35	2	M 06446 03	Hex key M5x20 UNI 5831*
8	1	S 41441 00 04	Pawls Camber Gear Z13 N4	36	1	S 41653 00 04	Pin for switch W46
9	2	A72521600	Roller Bearing 14,00x18"	37	1	M 06242 03	Screw M5x30*
10	1	S 41603 00 04	Gear Pin Ø12xØ16x52,5	38	1	A 941632 03	Assy ratchet W46
11	1	S 41448 00 04	Idler and Pulise Z23/Z13 W60	39	1	M0624103	Screw M4x16 UNI 5008*
12	2	A 741623 00	Roll bearing 24x15x19"	40	1	S 41859 00 01	Spring Ø13.67x12.7 (rl.SPEC C0420-005-05006*
13	1	A 941431 00	Assy Housing Winch 60 Winch Serial Number Sticker	41	1	S 65762 00 02	Spacer for stripper arm support W60*
14	6	M0606303	Screw M6x25 UNI 5031*	42	3	S 41875 00 03	Screw M5x50 U6107 Teflon Coating*
15	3	A 741450 00	Roller Bearing Ø16,0x107x26"	43	4	M0623103	Screw M6x40 TC DIN644A4*
16	1	S 41676 00 63	Winch Serial Number Sticker	44	4	M 06017 03	Screw M5x25 UNI 5031*
17	1	S 41449 00 40	Stripper Arm Housing W60	45	1	S 41917 00 80	Slider
18	1	S 28170 00 07	Red line	46	2	M 06190 03	Screw M5x20 UNI 6102*
19	1	S 65746 00 81	Cover 2 Speed W60	47	1	S 41658 00 41	Bushing
20	1	A 766457 00	Drum Assembly W60	48	1	S 65746 00 03	Stripper-arm W60
21	50	M 06192 80	Ball 5/16"	49	1	S 41657 00 01	Spring stripper arm W46
22	1	S 65754 00 02	Disconnect rod 60	50	1	S 65747 00 19	Pawl W60 Rewind
23	1	S 65753 00 04	Pawls camber Ø8xØ4"	51	1	S 65778 00 80	Spacer ring Winch 60*
24	1	S 65752 00 41	Gear Z23	52	1	S 65761 00 41	Tapered spacer for W60 drum
25	1	S 65751 00 04	Main shaft W60	53	8	S065670001	Spring*
26	1	S 41626 00 41	Disconnect flange	54	1	S 41436 00 A0	Upper Jaw W60
27	2	M 06141 08	Ball 5-16" inox	55	1	S 65749 00 53	Lower Jaw W60
28	1	M0616603	Seeger Ring UNI 7435-1075 - Ø28 mod. 17-7 Ph				

\*Service kit available; see winch kit section on the website [www.harken.com](http://www.harken.com)

\*\*Winch product sticker



## Radia® 60 STCW Rewind™ Winch (White Line)

Pos.	Qty	Code	Description	Pos.	Qty	Code	Description
1	1	A 667508 03 W	Assy Base W60 RAL 6003 (for White Line)**	29	1	M 06308 02	SMALLEY RING 55R0137-517
2	1	S 65755 03 04	Gear Z14 W60	30	1	A 765756 03	Commander W60
3	6	S 00006 03 08	Fluel 06"	31	1	A 965737 03	Assy knob W60
4	6	S 00038 03 01	Fluel Spring dia 8"	32	1	S 43743 03 80	Knob W46
5	1	S278170332	Washer 12 Sw48x1.5"	33	1	S 65759 03 80	Switch Support W60
6	1	S281310334	Pin for gear	34	1	M6309463	Spring loaded ball plunger 05"
7	1	S 41442 03 41	Ratchet Gear Z25xH4	35	2	M 06446 03	Hex key M5x20 UN 5031*
8	1	S 41441 03 04	Fluel Carrier Gear Z13 N4	36	1	S 41633 03 04	Pin for switch W46
9	2	A72821830	Roller Bearing 14/20/18"	37	1	M 06242 03	Screw M6x33*
10	1	S 41603 03 04	Gear Pin Ø12xØ16x52.5	38	1	A 941632 03	Assy socket W46
11	1	S 41448 03 04	Idler and Pin for Z25/Z13 W60	39	1	M0624103	Screw M4x16 UN 5033*
12	2	A 741623 03	Roll bearing 24x18x16"	40	1	S 41859 03 01	Spring Ø10.67x12.7 rlt.SPEC CD420-035-02006*
13	1	A 941431 03	Assy Housing Winch 60 Winch Serial Number Slider	41	1	S 65762 03 52	Spacer for stripper arm support W60*
14	6	M0606303	Screw M6x25 UN 5031*	42	3	S 41875 03 03	Screw M6x33 US107 Teflon Coating*
15	3	A 741480 03	Roller Bearing Ø35xØ17x26"	43	4	M0623103	Screw M6x40 TC DIN944*
16	1	S 41676 03 63	Winch Serial Number Slider	44	4	M 06017 03	Screw M6x25 UN 5031*
17	1	S 41443 03 40	Stripper Arm Housing W60	45	1	S 41917 03 80	Slider
18	1	S 28170 03 67	Red line	46	2	M 06190 03	Screw M5x20 UN 6102*
19	1	S 65748 03 61 W	Cover 2 Speed W60 RAL 6003 (for White Line)	47	1	S 41659 03 41	Bushing
20	1	A 766487 03	Drum Assembly W60	48	1	S 65746 03 03	Stripper-arm W60
21	50	M 06192 80	Ball 5/16"	49	1	S 41657 03 01	Spring stripper arm W46
22	1	S 65754 03 02	Disconnect rod 60	50	1	S 65747 03 19	Peeler W60 Rewind
23	1	S 65753 03 04	Fluel carrier Ø56xH2"	51	1	S 66579 03 80	Spacer ring Winch 60*
24	1	S 65752 03 41	Gear Z23	52	1	S 65761 03 41	Tapered spacer for W60 drum
25	1	S 65751 03 04	Main shaft W60	53	8	S385670301	Spring*
26	1	S 41626 03 41	Disconnect flange	54	1	S 41436 03 A3 W	Upper Jaw W60 RAL 6003 (for White Line)
27	2	M 06141 08	Ball 5-16" Inox	55	1	S 65749 03 53	Lower Jaw W60
28	1	M0616603	Seeger Ring UNI 7435 1975 - Ø29 rtd. 17-7 Ph				

\*Service kit available; see winch kit section on the website [www.harken.com](http://www.harken.com)

\*\*Winch product sticker

