

Harken® limited worldwide warranty

Refer to the Harken® Limited Worldwide Warranty in the Harken® Catalogue and on the website www.harken.com

Ordering spare parts

Spare parts can be requested from Harken® as described in the Harken® Limited Worldwide Warranty, indicating the part number in the Parts List and including the serial number of the winch for which the parts are required.

The serial number of the winch is printed on a plate on the drum support of the winch.



Manufacturer

Harken® Italy S.p.A.

Via Marco Biagi, 14
22070 Limido Comasco (CO) Italy
Tel: (+39) 031.3523511
Fax: (+39) 031.3520031
Email: info@harken.it
Web: www.harken.com

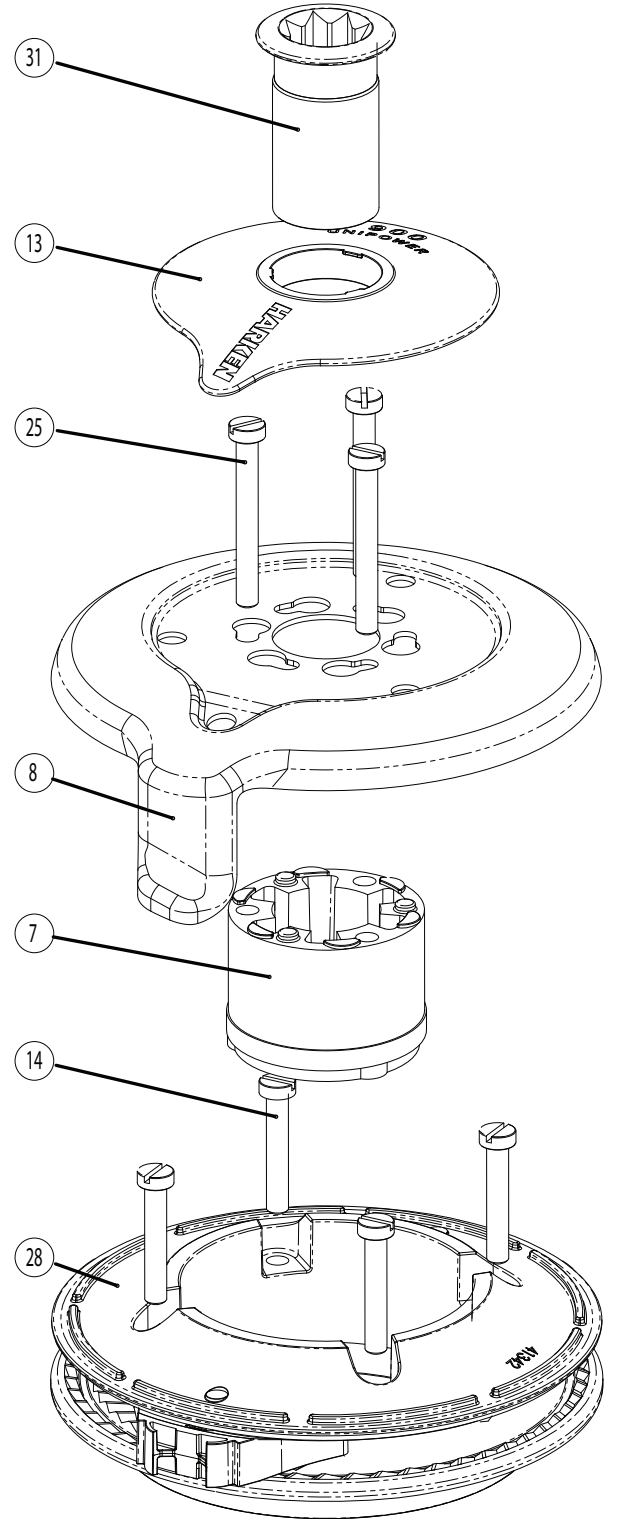
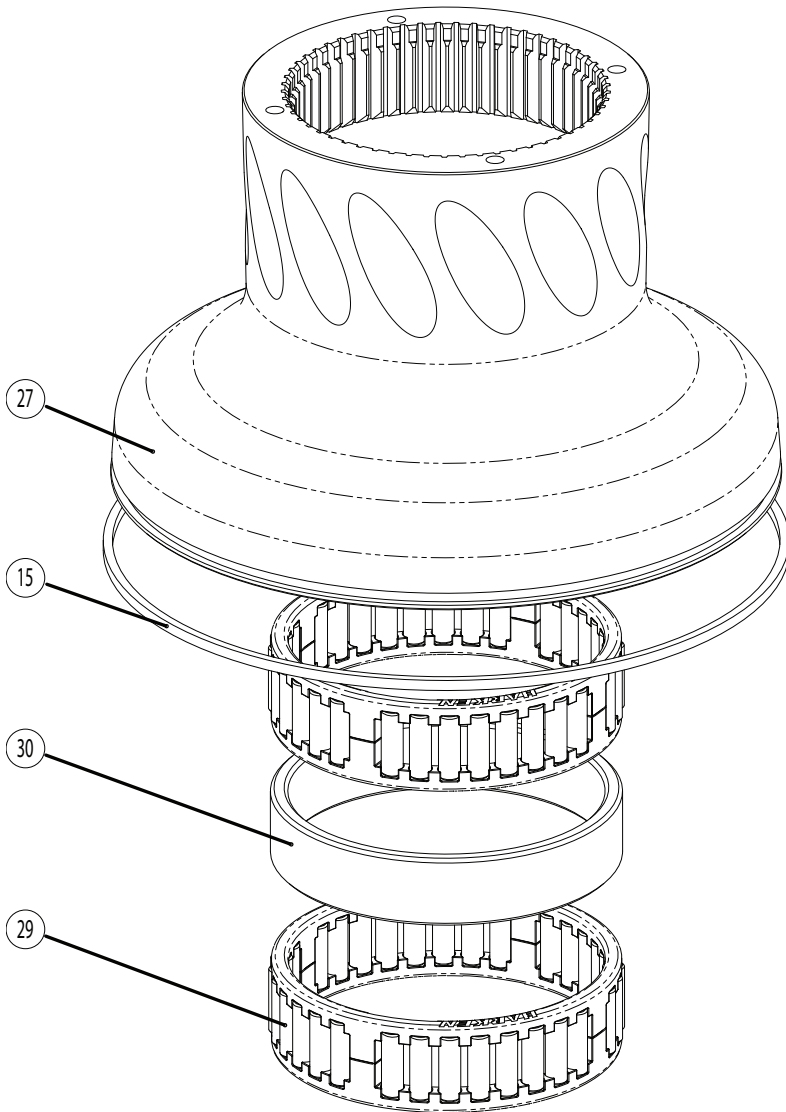
- **Tech Service**
Email: techservice@harken.it
- **Customer Service**
Tel: (+39) 031.3523511
Email: info@harken.it

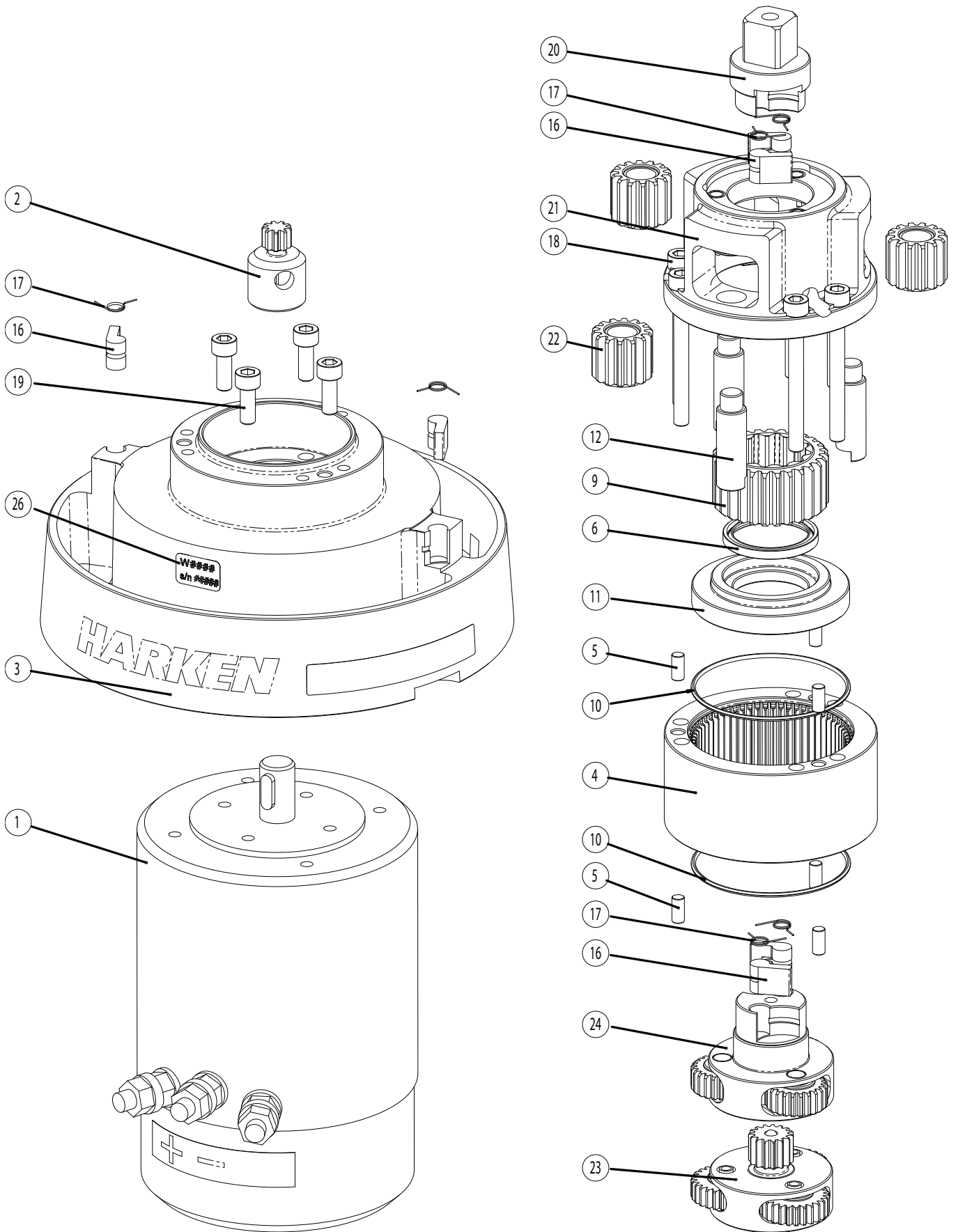
Headquarters

Harken®, Inc.

1251 East Wisconsin Avenue
Pewaukee, Wisconsin 53072-3755 USA
Tel: (262) 691.3320
Fax: (262) 691.3008
Email: harken@harken.com
Web: www.harken.com

- **Tech Service**
Email: technicalservice@harken.com
- **Customer Service**
Tel: (262) 691-3320
Email: customerservice@harken.com





UniPower 900 A

A= drum in anodised aluminium

Pos.	Q.ty	Code	Description
1	1	A 949533 00	Kit Motor 0,7kW 12V Unipower 900
		A 965086 00	Kit Motor 0,9kW 24V Unipower 900
2	1	S 49031 00 04	Pinion Z=9
3	1	A 949033 00	Assy base Unipower 900** <i>Winch Serial Number Sticker</i>
4	1	S 49034 00 04	Ring gear Z=63
5	6	S450660003	Roller Ø5x10.5*
6	1	M 06483 97	Seal 30x38x4 NBR
7	1	S4129400A0	Stripper arm support
8	1	S 41344 00 19	Stripper Arm W50
9	1	S 49078 00 04	Gear Z=27
10	2	M 60045 97	O Ring 2237
11	1	S 49080 00 80	Flange
12	3	S 49081 00 04	Pin Ø12*
13	1	S 49088 00 A5	Cover Unipower 900
14	4	M0601803	Screw UNI EN ISO 1207:1996 - M6x35 - A4*
15	1	S281690097	Red line
16	6	S 00008 00 03	Pawl Ø8*
17	6	S 00038 00 01	Pawl Spring Ø8*
18	6	M 06061 03	Screw M6x60 UNI5931*
19	4	M0635103	Socket head screw M6x16 UNI 5931
20	1	S 49096 00 04	Pawls carrier
21	1	A 949041 00	Gear carrier
22	3	A 949039 00	Gear assembly Z=10
23	1	A 949098 00	First planetary assy
24	1	A 949100 00	Second planetary assy
25	3	M6007103	Screw M6x50 UNI6107*
26	1	S418760063	Winch Serial Number Sticker
27	1	A 949042 00	Assy Drum Unipower <i>Drum Unipower 900</i> <i>Ball 3/16"</i>
28	1	A 949077 00	Assy Jaws Unipower 900 <i>Lower Jaw W50</i> <i>Upper Jaw Unipower 900</i> <i>Peeler W46-50</i> <i>Springs</i>
29	2	A 741351 00	Bearing Ø85xØ97x26*
30	1	S 41352 00 80	Spacer
31	1	A94136400	Assy Socket W20-80 <i>Screw M8x20 UNI 6109*</i> <i>Washer Ø7.7xØ25x5.8</i> <i>Socket Handle W20/80</i>

*Service kit available; see winch kit section on the website www.harken.com

**Winch product sticker



UniPower 900 C

C=drum in chromed bronze

Pos.	Q.ty	Code	Description
1	1	A 949533 00	Kit Motor 0,7kW 12V Unipower 900
		A 965086 00	Kit Motor 0,9kW 24V Unipower 900
2	1	S 49031 00 04	Pinion Z=9
3	1	A 949033 00	Assy base Unipower 900** <i>Winch Serial Number Sticker</i>
4	1	S 49034 00 04	Ring gear Z=63
5	6	S450660003	Roller Ø5x10.5*
6	1	M 06483 97	Seal 30x38x4 NBR
7	1	S4129400A0	Stripper arm support
8	1	S 41344 00 19	Stripper Arm W50
9	1	S 49078 00 04	Gear Z=27
10	2	M 60045 97	O Ring 2237
11	1	S 49080 00 80	Flange
12	3	S 49081 00 04	Pin Ø12*
13	1	S 49088 00 A5	Cover Unipower 900
14	4	M0601803	Screw UNI EN ISO 1207:1996 - M6x35 - A4*
15	1	S281690097	Red line
16	6	S 00008 00 03	Pawl Ø8*
17	6	S 00038 00 01	Pawl Spring Ø8*
18	6	M 06061 03	Screw M6x60 UNI5931*
19	4	M0635103	Socket head screw M6x16 UNI 5931
20	1	S 49096 00 04	Pawls carrier
21	1	A 949041 00	Gear carrier
22	3	A 949039 00	Gear assembly Z=10
23	1	A 949098 00	First planetary assy
24	1	A 949100 00	Second planetary assy
25	3	M6007103	Screw M6x50 UNI6107*
26	1	S418760063	Winch Serial Number Sticker
27	1	A 949461 00	Assy Drum C Unipower <i>Drum C Unipower 900</i> <i>Ball 3/16"</i>
28	1	A 949077 00	Assy Jaws Unipower 900 <i>Lower Jaw W50</i> <i>Upper Jaw Unipower 900</i> <i>Peeler W46-50</i> <i>Springs</i>
29	2	A 741351 00	Bearing Ø85xØ97x26*
30	1	S 41352 00 80	Spacer
31	1	A94136400	Assy Socket W20-80 <i>Screw M8x20 UNI 6109*</i> <i>Washer Ø7.7xØ25x5.8</i> <i>Socket Handle W20/80</i>

*Service kit available; see winch kit section on the website www.harken.com

**Winch product sticker

